

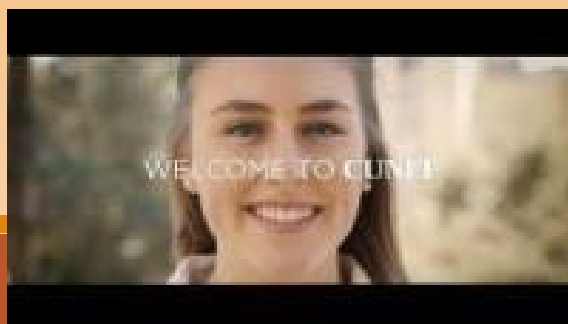
FACT SHEET 2023/2024



WEBSITE: [CES.CUNEF.EDU](https://ces.cunef.edu)

ERASMUS ID CODE: E MADRID03

ADDRESS: C/ LEONARDO PRIETO CASTRO 2 - 28040 - MADRID



ACADEMIC INFORMATION

REQUIRED APPLICATION DOCUMENTS	<ul style="list-style-type: none"> - Learning Agreement - Transcript of Records - Proof of English / Spanish proficiency (B2 minimum) - Passport / ID - Photo
ECTS / CREDITS	<p>Courses are measured in ECTS credits:</p> <ul style="list-style-type: none"> - 1 Semester ==> 30 ECTS - 1 Academic year ==> 60 ECTS
COURSE CATALOGUE	Please see available courses in the following link

GRADING SYSTEM

ECTS GRADE	CUNEF	DEFINITION
A	9.0 – 10	EXCELLENT
B	8 – 8.99	VERY GOOD
C	7 – 7.99	GOOD
D	5 – 6.99	SATISFACTORY
F	0 – 4.99	FAIL
Not Attended	NP	ABSENT

IMPORTANT DATES

2023/24	FALL SEMESTER	SPRING SEMESTER
Application Deadline	May, 31 st	November, 30th
Welcome Day	September, 1st	January, 25th
Start of classes	September, 4th	January, 29th
End of semester (exams included)	January, 20th	June, 1st
Retake exams period	June, 3rd - 15th	June, 17th - 29th

IMPORTANT INFORMATION

VISA

If you are a non-EU student, be aware you need to apply for a student visa. Please consult with the Spanish Embassy or Consulate in your current country.

For more information, click on the following link :

[Study visa \(exteriores.gob.es\)](http://exteriores.gob.es)

HEALTH INSURANCE

Insurance is mandatory before a stay in our institution. All Incoming Students must send us a valid copy of the Insurance policy they have contracted before their arrival at CUNEF.

Students from EU are entitled to health care and must present EHIC-card. For more information click on the following link:

[European Health Insurance Card - Employment, Social Affairs & Inclusion - European Commission \(europa.eu\)](http://europa.eu)

ACCOMODATION

Our Departmental Coordinators will guide incoming students in finding accommodation.

COUNSELING

The counselling service offered by CUNEF aims to help all students achieve their academic and personal well-being, helping them to sort out the different concerns they may have, always within a framework of complete confidentiality.

SPORTS AND VOLUNTEER WORK

These are activities that are performed outside of teaching hours, and which contribute towards the students' academic, professional and personal development. CUNEF offers different types of activities:

- Debate club
- Volunteer work
- Sports
- Legal challenge
- Business case competition

CAREER SERVICES

At CUNEF we have a Career Services Department to provide students and alumni with all the tools and skills they need, and the best possible opportunities to maximize their professional development.

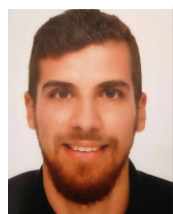
Some of the services provided by this department are:

- Employment platforms
- Career forum
- Individual mentoring sessions

WELCOME EVENTS

BUDDY PROGRAM	Upon arrival at CUNEF, each incoming student will be assigned a CUNEF Buddy (local student) who will help him / her to settle in both the university and the city.
WELCOME DAY	CUNEF organizes a Welcome Day for incoming students to meet our community, get acquainted with the university campus and academic procedures and non-academic information.
MEET AND GREET	To promote greater cultural, and social integration, CUNEF offers to the incoming students different activities outside campus through the international club of CUNEF.

CONTACTS



DANIEL CONDE

Incoming Coordinator

daniel.conde@cunef.edu

NATALIA REBOLLEDO

Bilateral Program Coordinator

natalia.rebolledo@cunef.edu



CUNEF Campus - Leonardo Prieto Castro, 2. Madrid 28040

Located in an extraordinary and unique location: Ciudad Universitaria of Madrid

It has an excellent assortment of public transportation, lines of communication and own parking lot



2, 44, 45,
127, 132



Vicente Aleixandre (L6)
Guzman El Bueno (L6)

